



South Africa, Lesotho & Eswatini Multi-Adventure

KwaZulu-Natal Culture & Epic Kruger Safari

Thank you for checking out our adventures and for downloading this itinerary. Please note that this itinerary may be subject to change depending on the specific departure date. Be sure to check with us before scheduling any flights.

We love talking travel!
Contact us at info@mtsobek.com
or call **800-974-0300**



Feel the difference

with **Mountain Travel Sobek**

Unrivaled Expertise

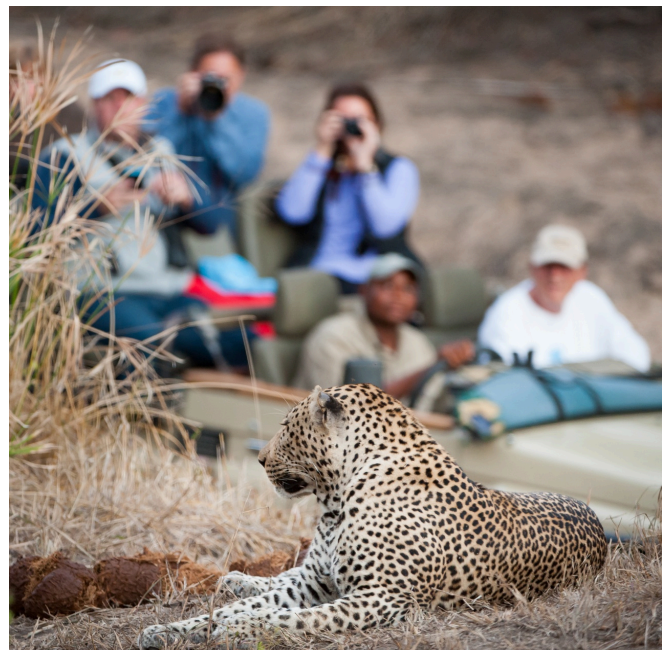
MT Sobek started it all! Since our first Everest Base Camp trek in 1969, we've been leading award-winning adventures and building authentic connections in far-flung locations around the world. We were named Best Adventure Tour Company in 2022 by USA Today's 10 Best Readers' Choice Awards.

Unique Trip Design

Our adventures are perfectly paced, with incredible attention to detail — the right mix of fun, learning, and challenge that guarantees lifelong memories. Plan nothing, enjoy everything. We take care of all of the logistics so that you can have more time to do what's most important: relax, take in the experience, and enjoy!

Small Groups

We keep our groups intentionally small — usually fewer than 10 people. This allows you a more intimate experience with the people and wildlife you encounter. With a smaller group size, we can take advantage of many unexpected invitations and opportunities that would be impossible with larger groups.





Leading the Way

World-Class Local Guides

Our knowledgeable and passionate expert guides effortlessly create an immersive local experience for you. They are trained to the highest professional standards and are at the heart of everything we do. They make it possible to meet the challenges of adventure travel, and help create lasting memories and lifelong friendships... we can confidently say our guides are the best in the business.





Why take this trip with us?

REASON 1

This adventure gives you access to hidden gems in South Africa's KwaZulu-Natal, the Kingdom of Lesotho, and the Kingdom of Eswatini (Swaziland).

REASON 2

Experience unforgettable wildlife encounters, deep cultural immersion, plus excellent hiking in the spectacular Drakensburg range.

REASON 3

Consistent with our 55-year history on the continent our local team provides insightful context and authentic interactions in each of the three kingdoms.

At A Glance

ACTIVITIES

Great mix of game drives, hiking, cultural touring, and optional zip lining and caving adventures.



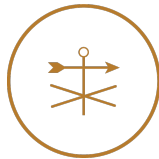
LODGING

From historical hotels to countryside inns, this trip includes some of the best accommodations in the Three Kingdoms.



CLIMATE

Expect temperatures in the various regions between 70-80°F during the day and 50-60°F in the evenings.



KNOW BEFORE YOU BOOK

"What a total comfort to know that with MT Sobek, you're in the hands of professionals who have been doing it so long and so well. That was part of why we landed on them as our operators for our dream trip, and everything about the experience they gave us—from tailored expertise to unswerving professionalism—confirmed the company's emphasis on excellence." - Alex M.



South Africa, Lesotho & Eswatini Multi-Adventure

KwaZulu-Natal Culture & Epic Kruger Safari

Discover the majesty of three African kingdoms: South Africa's KwaZulu-Natal and its Zulu people, the mountainous Kingdom of Lesotho, and the hikers paradise Eswatini (formerly Swaziland). Relish unparalleled wildlife experiences on safari walks, game drives, and sunset cruises. Hike up to the Amphitheatre in the UNESCO-protected Drakensberg region. Learn about apartheid in Durban and KwaZulu-Natal, and venture into the spectacular landscapes of Eswatini. From the thrills of spotting elephants in the wilds of Kruger National Park to spectacular views from the highest pub in Africa, this once-in-a-lifetime active adventure guarantees unforgettable experiences!

12 Days

Start: Johannesburg, South Africa

End: Johannesburg, South Africa

Departing: June, September

Activities: Safari & Wildlife, Multi-Adventure

Lodging: Comfortable Hotels

Group Size: 6-12 Guests

ACTIVITY:



Check [mtsobek.com](https://www.mtsobek.com) for date-specific pricing.

“

“Great experience every time with some of the most knowledgeable guides in their fields. We always come home with wonderful memories of the people we meet and things we see.”

- Bob J.

The Itinerary

DAY
01

Arrive in Johannesburg

Welcome to Africa! Upon arrival at OR Tambo International Airport, meet your guide and transfer to the hotel. Depending on your flight's arrival time, you may get an afternoon tour of Soweto. This evening, enjoy a welcome dinner with the group.

MEALS: Lunch | Dinner

DAY
02

Take a Nature Hike en Route to Northern Drakensberg

After breakfast, transfer to Northern Drakensberg, in KwaZulu-Natal province. En route, stop for lunch at a historical property dating back to the years preceding the First Boer War. After lunch, take an informative guided hike and learn about the rich history of the area, as well as the indigenous cultures of the Zulu and Sotho communities. This is a great bird-watching and game-viewing opportunity, as there are loads of interesting fauna and flora on certain routes. Then continue to the majestic Northern Drakensberg region, your home for two nights.

MEALS: Breakfast | Lunch | Dinner

TRANSPORTATION: 4-hour private van transfer

DAY
03

Hike to the Amphitheatre in Royal Natal National Park

A scenic morning drive takes you to the start of today's hike in stunning Royal Natal National Park. The initial leg is the most strenuous (but doable for all fitness levels), then levels out onto an easy contour path. Two ladders span the last 100 feet of the cliff; alternatively, you can ascend via the gully. The reward: standing atop the famous Amphitheatre — on the roof of South Africa! After exploring the summit, ascend Beacon Buttress for the return trip via the gully or ladders and the easy path downhill.

MEALS: Breakfast | Lunch | Dinner

ACTIVITY: 6-8 hours/9 miles hiking, 1,800' elevation gain

DAY
04

Head to Southern Drakensberg

Depart after breakfast for another scenic drive, this time to Underberg, in the Southern Drakensberg. On the way, stop for lunch and visit the internationally renowned Ardmore Ceramic Studio, founded in 1985 by Zimbabwean-born ceramic artist Fee Halsted. Originally established in the Drakensberg foothills, today the bustling studio and gallery sits in the picturesque Caversham Valley in South Africa's Natal Midlands. Here you meet the local artists, some of whose work has been commissioned by the likes of Hermes and Queen Elizabeth II.

MEALS: Breakfast | Lunch | Dinner

TRANSPORTATION: 4-hour private van transfer

DAY 05

Tour the Kingdom of Lesotho

Relish a full-day tour of Lesotho, a high-altitude, landlocked kingdom crisscrossed by a network of rivers and mountain ranges, making for breathtaking scenery. Begin today with a 4x4 drive up the Sani Pass (9,436'), atop which you enjoy lunch at the highest pub in Africa — the Sani Mountain Lodge — with incredible views over KwaZulu-Natal. After lunch, continue to Skeering, a living village of Basotho, a Bantu ethnic group that has inhabited this region since the fifth century, where your experienced mountain guide discusses Lesotho and its people.

MEALS: Breakfast | Lunch | Dinner

ACTIVITY: Full day cultural touring

DAY 06

Discover Durban

Drive through the scenic Natal Midlands this morning bound for Durban. Upon arrival, stroll up historical Florida Road and stop for lunch of a local specialty, "bunny chow" — street food that harks back to the Indian indentured laborers from the 19th century. Along the Durban promenade, bordering the warm Indian Ocean, take a leisurely cycle along the beachfront to iconic Moses Mabhida Stadium, which you ascend by funicular for incredible views. Stop at the Kwa Muhle Museum for insight into Durban's history of apartheid before enjoying dinner on your own.

MEALS: Breakfast | Lunch

TRANSPORTATION: 3-hour private van transfer

ACTIVITY: 1 hour/2 miles cycling

DAY 07

Enter the Kingdom of the Zulu

En route to northern KwaZulu-Natal, the Kingdom of the Zulu, visit the Luthuli Museum, the former residence of Chief Albert Luthuli. Luthuli was awarded the Nobel Peace Prize in 1960 for his fight against apartheid. Arrive at the foot of legendary Ghost Mountain for lunch. Then immerse yourself in a Lebombo Mountains community and enjoy a cultural walk with remarkable views. Learn about rural Zulu customs and modern-day living, interact with local people, and gain insight into life in Zululand. Time permitting, also hike to the top of Ghost Mountain.

MEALS: Breakfast | Lunch | Dinner

TRANSPORTATION: 3.5-hours private van transfer

ACTIVITY: 1 hour walk, possible 3-4 hours/3-5 miles hiking



DAY
08

Spot Wildlife in Mkuze Game Reserve

Today is a full day of getting up close to South Africa's resident animals! Start with a game drive at Mkuze Game Reserve, where you see elephant, giraffe, white rhino, and other grazing animals, as well as beautiful birdlife. After lunch, stay in the reserve for a ranger-led Fig Forest walk, a special-permission walk arranged exclusively for your group. Come late afternoon, return to the inn for a relaxing evening.

MEALS: Breakfast | Lunch | Dinner

TRANSPORTATION: 3-hour cruise, game drive in 4x4 vehicle

ACTIVITY: 2 hours walking

DAY
09

Lake Jozini and the Kingdom of Eswatini

Arise and shine for a morning cruise on Lake Jozini, one of South Africa's largest dams, for a chance to spot elephant, rhino, hippo, crocodile and birds. Continue on to the landlocked Kingdom of Eswatini, rife with beautiful mountain scenery, game reserves, lush valleys, misty mountains, ancient rock formations, and plunging waterfalls. In the lower reaches of the country are unexpected expanses of sugar-cane farms and typical African bush. Discover it all today with your expert guide. Dinner is at the hotel.

MEALS: Breakfast | Lunch | Dinner

TRANSPORTATION: 3-hour private van transfer



Go on Safari in Kruger National Park

Gear up for an authentic safari experience today! Drive to a private concession within the southern part of Kruger National Park, an enormous wilderness area comprising nearly two million hectares. The topography, vegetation, and game vary dramatically from south to north in the park. The park's southern part sees the most rainfall and denser animal numbers. Moving north, rainfall becomes scarcer and animals center around the river courses and waterholes. Upon arrival at the lodge, have lunch and then set out for an afternoon game drive. Your guide will seek out the impressive Big Five — leopard, lion, rhino, elephant, and buffalo — plus antelope and other exciting game, and an incredible 420 species of bird.

MEALS: Breakfast | Lunch | Dinner

TRANSPORTATION: 4-hour private van transfer

ACTIVITY: Game drive



Spot the Big Five in Kruger National Park

Another full-day safari in Kruger. Expert guides and trackers share their knowledge of these animals with you on today's safari adventure, which comprises morning and afternoon game drives. Hear the whooping of hyenas, the reverberating roar of a lion, the loud grunting of hippos, the majestic trumpeting of elephants, or the peaceful call of the fish eagle...this is African wildlife at its finest!

MEALS: Breakfast | Lunch | Dinner

ACTIVITY: Two game drives



Enjoy One More Safari Before Departing for Home

After a final morning game drive and breakfast, say farewell to the bush and drive to Johannesburg's OR Tambo International Airport for your departure flight home.

MEALS: Breakfast | Lunch

TRANSPORTATION: 5.5-hour private van transfer

ACTIVITY: Game drive



Where You'll Stay

These accommodations may be subject to change depending on your date of travel.

Peech Hotel

An eco-boutique hotel situated in Johannesburg's upmarket suburb of Melrose, the Peech is surrounded by tall trees and a lush manicured garden. The spacious, airy rooms offer lovely views and expected amenities, some with patios opening onto the garden. The property is ideally located close to the shopping and entertainment districts of Melrose Arch and Sandton and near the Apartheid Museum.

African Rock Hotel

A lovely boutique hotel with just 11 rooms awaits you in a quiet suburb close to Johannesburg International Airport. Stylish interiors include amenities such as air-conditioning, Wi-Fi, and satellite TV. Guests receive a complimentary 15-minute shoulder massage to unwind after long flights, and a swimming pool and spa offer further relaxation. The Blue Hippo Restaurant features African fusion cuisine with indoor and patio seating, or room service.

Cavern Resort & Spa

Named after the infamous Cannibal Cavern, this family-run resort is nestled in the foothills of the Northern Drakensberg, a place of captivating beauty, and surrounded by lush indigenous forests and clear streams. Once a humble rustic homestead, today the Cavern is a lovely resort with rooms set amidst manicured gardens and a spa offering myriad soothing treatments.



Where You'll Stay

These accommodations may be subject to change depending on your date of travel.

Montusi Mountain Lodge

Get the full Northern Drakensberg experience at Montusi Mountain Lodge, dedicated to the conservation of the area and its wildlife. Montusi boasts the privilege of space, with 16 suites set in open gardens, each with spectacular views of the famous Amphitheatre escarpment and surrounding mountains. Local, award-winning cuisine is served in the intimate restaurant.

Premier Resort Sani Pass

This stunning resort in the Southern Drakensberg, nestled at the foot of Sani Pass, offers guests incredibly scenic accommodation. Contemporary, spacious rooms provide breathtaking mountain views, as does the restaurant, which serves a breakfast buffet, a midday "terrace menu," and themed dinners. Family-friendly activities including hiking, biking, 4x4 excursions, and pony rides for kids.

Moorcraft Manor Boutique Country Hotel

Nestled at the foot of Africa's highest mountain range, Moorcraft Manor comprises 12 delightful rooms. Each room has a private verandah, stunning views of the grasslands and Drakensberg Mountains, and access to the lush surrounding gardens. Rooms include luxury bedding, Wi-Fi, DSTV, and complimentary sherry. The restaurant features locally sourced ingredients on a seasonal menu and a selection of South African wines for pairing.

Quarters Hotel

Four elegant Victorian houses have been reimaged by award-winning architects into Quarters Hotel. Located in a suburb of Durban within easy reach of shops and restaurants, the hotel features Wi-Fi, an onsite restaurant and bar, terrace, and garden. Rooms blend old-world charm with modern elegance, are air-conditioned with flat screen TV, and include a tiled bathroom with bathtub.

Protea Hotel Umhlanga

With spectacular views overlooking the KwaZulu-Natal coast, Protea Hotel uMhlanga is a modern property just a few minutes away from the beach. Its 260 guest rooms have air-conditioning, minibar, complimentary Wi-Fi and stylish furnishings. Most have partial sea views. When you are not out exploring, there is a plunge pool and fitness center to entice you, and an onsite restaurant serving delicious fare.

Ghost Mountain Inn

At the foot of legendary Ghost Mountain lies this country-style inn. This welcoming, four-star family hotel and spa is central to many Zululand and coastal reserves. Shrouded in mystery and folklore, the historical mountain stands sentry over the hotel's open-plan central areas. Light, airy guest spaces maximize the scenic environs, and rooms have furnished patios from which to experience the rhythm of Africa.



Where You'll Stay

These accommodations may be subject to change depending on your date of travel.

Summerfield Botanical Garden & Exclusive Resort

Nestled within the idyllic garden enclave of the Summerfield Botanical Garden, the eponymous resort is a luxurious boutique hotel with an environment that captures the proud traditions and gentle charm of the Kingdom of Swaziland. Creatively designed and artistically decorated accommodations boast garden or mountain vistas, the restaurant offers elegant fine dining and informal alfresco meals, and the hospitality is world-class.

Hoyo Hoyo Safari Lodge

Days spent on safari in Kruger National Park are followed by nights in six traditional thatched-roof rooms outfitted with designer fabrics and splashes of bright color. Each rondavel is air-conditioned and has folding glass doors allowing you to experience the wilderness. There is an ensuite bath and separate stone bath and outdoor shower. The swimming pool overlooks the river and any wildlife passing through.

Hamiltons Tented Camp

Set on a private concession within Kruger National Park, Hamiltons features six elegant, tented suites with teak wood floors, overlooking the river. In classic safari style, rooms are decorated with steamer trunks and brass fittings. Each tent has a lounge with leather couch and mini bar as well as a private plunge pool on the surrounding teak deck. En suite baths have freestanding bathtubs and rain showers with a view.

Departure Dates

This trip is available to run in: June, September

Book early for a greater choice of available dates.

Once you book, your price is GUARANTEED!

June 2-13, 2024

July 8-19, 2024

August 13-24, 2024

September 15-26, 2024

October 14-25, 2024

What's Included

PRICE INCLUDES

- Expertise and services of our experienced adventure guides
- All accommodations as noted in the itinerary
- All breakfasts, almost all lunches and dinners as noted in the itinerary
- Snacks and water between meals
- Additional regional guides and experts on many trips
- Comprehensive Trip Planner with detailed pre-trip information
- Private guided tours at historic sites, museums, wineries and other select attractions as noted in the itinerary
- Special events and other select attractions as mentioned in the itinerary
- All gratuities at hotels and restaurants
- Equipment and experienced guides for activities as described in the itinerary
- Park and other entry fees (unless otherwise noted)
- Fares for trains, ferries and other modes of travel as listed in the itinerary
- Select transfers as mentioned in the itinerary
- Baggage transfers and portorage

PRICE DOES NOT INCLUDE

- International airfare, airport taxes, and excess baggage fees
- Alcoholic beverages (MT Sobek provides wine at select events)
- Gratuities for MT Sobek guides and guide-drivers
- Travel Protection Program
- Personal expenses



MT SOBEK™

The Adventure Company | Est. 1969

YOUR ADVENTURE AWAITS.

70 Countries | 150+ Destinations | Infinite Possibilities

Call **800.974.0300** or visit **mtsobek.com**
AND BOOK TODAY!

