



Montana Glacier National Park Hiking

Majestic Rocky Mountains & Scenic Lodges

Thank you for checking out our adventures and for downloading this itinerary. Please note that this itinerary may be subject to change depending on the specific departure date. Be sure to check with us before scheduling any flights.

We love talking travel!
Contact us at info@mtsobek.com
or call **800-974-0300**



Feel the difference

with **Mountain Travel Sobek**

Unrivaled Expertise

MT Sobek started it all! Since our first Everest Base Camp trek in 1969, we've been leading award-winning adventures and building authentic connections in far-flung locations around the world. We were named Best Adventure Tour Company in 2022 by USA Today's 10 Best Readers' Choice Awards.

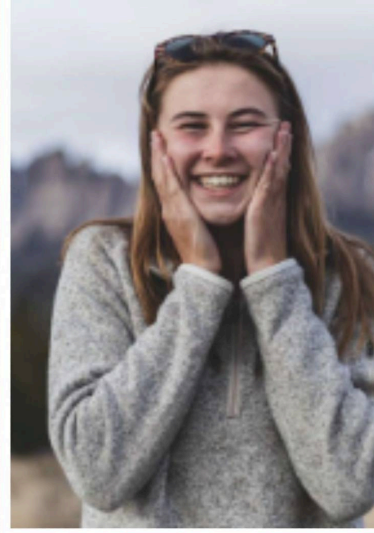
Unique Trip Design

Our adventures are perfectly paced, with incredible attention to detail — the right mix of fun, learning, and challenge that guarantees lifelong memories. Plan nothing, enjoy everything. We take care of all of the logistics so that you can have more time to do what's most important: relax, take in the experience, and enjoy!

Small Groups

We keep our groups intentionally small — usually fewer than 10 people. This allows you a more intimate experience with the people and wildlife you encounter. With a smaller group size, we can take advantage of many unexpected invitations and opportunities that would be impossible with larger groups.





Leading the Way

World-Class Local Guides

Our knowledgeable and passionate expert guides effortlessly create an immersive local experience for you. They are trained to the highest professional standards and are at the heart of everything we do. They make it possible to meet the challenges of adventure travel, and help create lasting memories and lifelong friendships... we can confidently say our guides are the best in the business.





Why take this trip with us?

REASON 1

MT Sobek has been exploring US National Parks for more than 50 years, placing a strong emphasis on responsible travel practices that support local communities and protect the natural environment.

REASON 2

In six epic and well-paced days on the trail, you'll experience the best of this mountain paradise including hanging valleys, alpine tundra, jagged peaks, and permanent snowfields.

REASON 3

Follow top-notch guides as they share their passion and in-depth knowledge of this remote and expansive alpine region. We also partner with the Glacier Institute team for an enhanced interpretive experience.

At A Glance

ACTIVITIES

Hiking on rocky paths for 6 to 9 miles per day at 1,500' to 8,850' elevation.



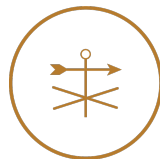
LODGING

Modern and historic three-star lodges with comfortable accommodations in five-star alpine settings.



CLIMATE

Expect sunny days in July, August, and September with high daily temperatures from the 60-80°Fs. Always be prepared for rain showers.



KNOW BEFORE YOU BOOK

Accommodation

The national park accommodations on this trip provide great access to the top activities in the area. However, they are simpler compared to what we usually consider comfortable lodging - the rooms being more basic. Some buildings date back to the early 1900s and have been minimally renovated to follow park regulations. Overall, the service might feel slower and meal quality and selection much more limited compared to other MT Sobek trips. Keep in mind that internet and cell phone service are very limited throughout the parks.



Montana Glacier National Park Hiking

Majestic Rocky Mountains & Scenic Lodges

Glacier National Park offers some of the most dramatic mountain scenery on Earth. Chiseled valleys are blanketed with wildflowers while bottomless lakes mirror soaring peaks. Rolling grasslands stretch to the horizon and a wealth of wildlife, including bighorn sheep and black bears, call these mountains home. Explore some of the parks' most scenic trails, hike through ancient cedar and hemlock trees to the base of glaciers, travel the stunning Going-to-the-Sun Road, and raft the Middle Fork of the Flathead River. Sleep well at perfectly located lodging.

6 Days

Start: Whitefish, Montana

End: Kalispell, Montana

Departing: June, July, August, September

Activities: Multi-Adventure, Hiking & Trekking

Lodging: Comfortable Hotels

Group Size: 6-12 Guests

ACTIVITY:



Check [mtsobek.com](https://www.mtsobek.com) for date-specific pricing.

“

“A prominent reason we have chosen MT Sobek as our favorite adventure travel company has been the excellent travel guides.”

- Carol & Burt D.

The Itinerary

DAY
01

Explore West Glacier

Welcome to Whitefish, Montana! Your guide will pick you up this morning from your pre-trip hotel. Following an orientation meeting, you will embark on a hike along the first tourist trail ever constructed in Glacier National Park! Marvel at the towering trees, some over 500 years old, thriving in the unique climate of the Lake McDonald Valley. The trail unfolds with breathtaking sights, including the lower Avalanche Gorge. Upon reaching Avalanche Lake at the base of Bearhat Mountain, you will continue along the shore with glimpses of distant waterfalls originating from Sperry Glacier. Conclude the day with dinner at a local favorite restaurant in Whitefish.

MEALS: Lunch | Dinner

TRANSPORTATION: Two 45-minute private van transfer

ACTIVITY: 5-6 hours/6 miles hiking with 575 ft elevation gain

DAY
02

Experience Going-to-the-Sun Road & Follow Alpine Trails

Check out of the lodge and start your travel east via Going-to-the-Sun Road, one of the most celebrated roads in the US. An engineering masterpiece, the road took 35 years to complete. Marvel at the spine-tingling scenery as you reach Logan Pass (6,646'), atop the Continental Divide. Break at Logan Pass for a pretty alpine hike to Hidden Lake Overlook or along Highline Trail (depending on the group's ability). Explore the east side of Glacier National Park before checking into your lodging for the next three evenings.

MEALS: Breakfast | Lunch | Dinner

TRANSPORTATION: 3-4-hour private van transfer

ACTIVITY: 2-3 hours/3-5-miles hiking with 200'-400' elevation gain

DAY
03

Trek to Grinnell Glacier

Spend the day immersed in the beauty of iconic Many Glacier Valley, often referred to as the "Switzerland of North America." Soak in the alpine scenery as you start your trek to Grinnell Glacier, one of the most spectacular hikes in the park. You will be rewarded with views of glacial lakes and crystalline cascading waterfalls with stunning vistas of the surrounding peaks. At the trail's end, enjoy the view of massive Grinnell Glacier and the milky turquoise Grinnell Lake, which is formed from the glacier's melt, along with two smaller glaciers above Grinnell: Salamander and Gem.

MEALS: Breakfast | Lunch | Dinner

TRANSPORTATION: Two 60-minute private van transfers

ACTIVITY: 7-8 hours/11 miles hiking with 1,600' elevation gain



DAY 04

Scenic Hike to Iceberg Lake

Embark on a hike to breathtaking Iceberg Lake, following one of the best trails in the Many Glacier area. Ascend along the lower slopes of Mt. Henkel (8,770'), and delight in views of Mt. Grinnell (8,851') and Mt. Wilbur (9,321'). Continue to the head of the valley and trace the base of the Ptarmigan Wall. From the ridge, the trail heads south and opens to a beautiful view of turquoise Iceberg Lake, nestled in a perfect cirque with peaks rising up over 3,000 feet around it. After returning to your hotel, you will have free time to enjoy the view at your leisure.

MEALS: Breakfast | Lunch | Dinner

TRANSPORTATION: Two 60- minute private van transfers

ACTIVITY: 6-7 hours/9.3 miles hiking with 1,450' elevation gain

DAY 05

Explore Two Medicine Valley

After breakfast, set out for a day's exploration of Two Medicine Valley, which is located along the southeastern edge of the park and shared with the neighboring Blackfeet Nation. Learn why this area is considered sacred by the Blackfeet as you hike along the shore of Two Medicine Lake and past the iconic Mt. Sinopah. Travel to Whitefish, check in to Grouse Mountain Lodge for the evening and gather with your guide and fellow adventurers for a farewell dinner.

MEALS: Breakfast | Lunch | Dinner

TRANSPORTATION: 3-hour private van transfer

ACTIVITY: 4-5 hours/7.7 miles hiking with 350' elevation gain



Hike Whitefish Mountain Resort & Depart

Following breakfast, it's time to explore Whitefish Mountain Resort starting with an open chairlift ride with 360-degree views of Whitefish Lake, Glacier National Park, and the Flathead Valley. Hike around the East Rim to take in the views and enjoy the fresh mountain air. End your adventure with a transfer to Glacier Park International Airport

MEALS: Breakfast

TRANSPORTATION: 40-minute private van transfer

ACTIVITY: 1 hour/1.5 miles hiking



Where You'll Stay

These accommodations may be subject to change depending on your date of travel.

Grouse Mountain Lodge

Just eight miles from Whitefish Mountain Resort and one mile from downtown Whitefish, Grouse Mountain Lodge is a comfortable base camp. The hotel features comfortable rooms and suites. The hotel also offers a shuttle to downtown, pool, outdoor hot tub, sauna, 24-hour gym, complimentary WiFi, and the on-property Logan's Bar and Grill which serves up Montana casual cuisine.

Glacier Park Lodge

The historic Glacier Park Lodge, located in the southeast corner of Glacier National Park, was built by the Great Northern Railway. The expansive lobby features towering Douglas fir logs, a large stone fireplace, and plenty of relaxed seating. The accommodations are modest and authentic providing a true National Park Lodge experience. While there is no television or air conditioning at the property, complimentary Wi-Fi is available. The hotel features several on-property dining options including the Great Northern Dining Room which serves up classic entrees and robust dinner salads.



Where You'll Stay

These accommodations may be subject to change depending on your date of travel.

Many Glacier Hotel

Many Glacier Hotel is situated on the shores of Swiftcurrent Lake inside Glacier National Park. The historic hotel was built by the Great Northern Railway in 1914-15 and features a spectacular lakeside setting. All guest rooms at Many Glacier Hotel are rustic, yet comfortable. In keeping with the era in which the hotel was built, the rooms offer guests modest amenities and old-world style accommodations. There are no televisions or air conditioning. The hotel also offers several on-property dining options including the lakeside Ptarmigan Dining Room.

Departure Dates

This trip is available to run in: June, July, August, September

Book early for a greater choice of available dates.
Once you book, your price is GUARANTEED!

July 22-27, 2024

August 26-31, 2024

September 2-7, 2024

July 20-25, 2025

July 27-August 1, 2025

August 3-8, 2025

August 10-15, 2025

August 17-22, 2025

August 24-29, 2025

What's Included

PRICE INCLUDES

- Expertise and services of our experienced adventure guides
- All accommodations as noted in the itinerary
- All breakfasts, almost all lunches and dinners as noted in the itinerary
- Snacks and water between meals
- Additional regional guides and experts on many trips
- Comprehensive Trip Planner with detailed pre-trip information
- Private guided tours at historic sites, museums, wineries and other select attractions as noted in the itinerary
- Special events and other select attractions as mentioned in the itinerary
- All gratuities at hotels and restaurants
- Equipment and experienced guides for activities as described in the itinerary
- Park and other entry fees (unless otherwise noted)
- Fares for trains, ferries and other modes of travel as listed in the itinerary
- Select transfers as mentioned in the itinerary
- Baggage transfers and portorage

PRICE DOES NOT INCLUDE

- International airfare, airport taxes, and excess baggage fees
- Alcoholic beverages (MT Sobek provides wine at select events)
- Gratuities for MT Sobek guides and guide-drivers
- Travel Protection Program
- Personal expenses



MT SOBEK™

The Adventure Company | Est. 1969

YOUR ADVENTURE AWAITS.

70 Countries | 150+ Destinations | Infinite Possibilities

Call **800.974.0300** or visit **mtsobek.com**
AND BOOK TODAY!

