



# New Zealand Custom Adventure

Exploring the North and South Island

**Curated for MT Sobek Custom Clients**

Thank you for checking out our adventures and for requesting this custom itinerary. Please note that this itinerary may be subject to change. Be sure to check with us before scheduling any flights.

**We love talking travel!**

Contact [info@mtsobek.com](mailto:info@mtsobek.com)  
or call **510 594 6000**.





# Feel the difference

with **Mountain Travel Sobek**

## Unrivalled Expertise

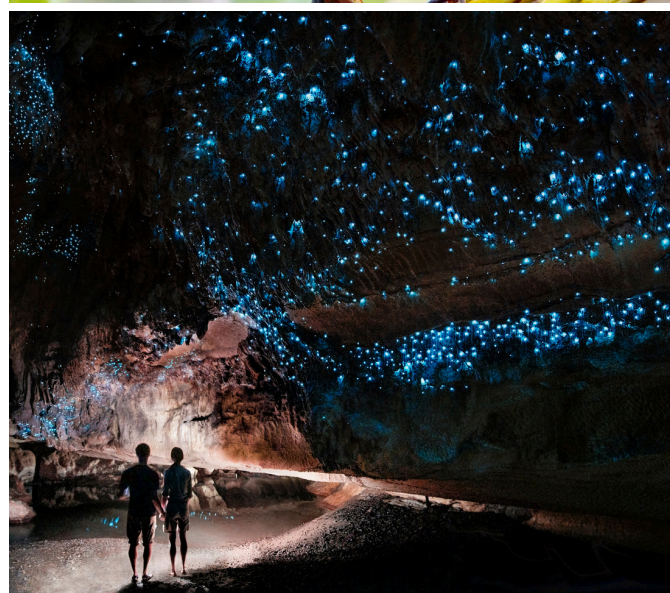
MT Sobek started it all! Since our first Everest Base Camp trek in 1969, we've been leading award-winning adventures and building authentic connections in far-flung locations around the world. We were named Best Adventure Tour Company by *USA Today* and *Newsweek* and have an award-winning staff.

## Unique Trip Design

Our adventures are perfectly paced, with incredible attention to detail—the right mix of fun, learning, and challenge that guarantees lifelong memories. Plan nothing, enjoy everything. We take care of all of the logistics so that you can have more time to do what's most important: relax, take in the experience, and enjoy!

## Custom Adventures

Private MT Sobek adventures are perfect for travelers who enjoy the flexibility of traveling in their own group, but who want the peace of mind that comes with having all of the logistics handled by true experts. We offer an array of perfectly tailored custom adventures and scheduled dates that your group can easily take over.







## New Zealand Custom Adventure

Embark on a 10-day custom adventure through New Zealand's North and South Islands. From Auckland's food and wine experiences to the magical Hobbiton Movie Set, you'll explore geothermal wonders in Rotorua, cruise through Milford Sound, and dive into the heart of Queenstown's outdoor thrills. Along the way, stay in hand-picked accommodations like the Movenpick Hotel, Distinction Te Anau, and Scenic Suites Queenstown, all selected for comfort and ideal locations. With a blend of adventure, culture, and stunning landscapes, this trip is designed to leave you with unforgettable memories of New Zealand's finest offerings.

### 10 Days

**Start:** Auckland, New Zealand

**End:** Queenstown, New Zealand

**Activities:** Hiking

**Lodging:** Luxury Hotels, Comfortable Hotels

**ACTIVITY LEVEL:** 2

#### Climate:

Expect warm summer weather with daytime temperatures ranging from the 60s to upper 70s °F. Evenings can be cooler, especially in the South Island. Be prepared for occasional rain and strong UV rays—sunscreen and layers are essential.

# Your Custom Itinerary



## Arrive in Auckland

Arrive in Auckland, where your driver will greet you for a seamless transfer to your overnight accommodations. The largest city in New Zealand (though not its capital), Auckland offers stunning harbors, vibrant arts and food scenes, and easy access to beaches, volcanic landscapes, and rich Māori culture—all in one dynamic city.

**ACCOMMODATION:** Movenpick Hotel Auckland or similar

**TRANSPORTATION:** Private Vehicle Transfer

---



## Full Day Waiheke Island Gourmet Food & Wine Tour

After a quick ferry ride, discover the best of Waiheke on this immersive full day food and wine tour. Savor fresh oysters, award-winning olive oil, and artisan treats, perfectly paired with boutique wines at two top vineyards. Your expert guide shares insights as you visit an acclaimed olive oil mill and indulge in gourmet tastings. Enjoy a vineyard lunch platter amid stunning scenery. If Te Matuku Bay oysters are unavailable, a delicious seasonal alternative awaits. A true taste of Waiheke's finest flavors!

**ACCOMMODATION:** Movenpick Hotel Auckland or similar

**MEALS:** Breakfast | Lunch

**TRANSPORTATION:** Ferry Tickets

**ACTIVITY:** Shared Food & Wine Tour

---



## Hobbiton Movie Set Tour / Evening Lake Okareka Glow Worm Kayak Tour

This morning you will collect your rental vehicle (included in your tour cost) and make your way to Hobbiton near Matamata. Once there, you will embark on an unforgettable 2.5-hour journey into the heart of Middle-earth at the iconic Hobbiton Movie Set. Nestled in the rolling green hills of the Waikato region, this charming landscape captivated director Sir Peter Jackson—and now, it's your turn to experience the magic. Wander through the picturesque Shire on a fully guided walking tour, exploring famous filming locations and uncovering behind-the-scenes secrets. Stroll past Bag End, peek inside the newly completed Hobbit Hole on Bagshot Row, and cap off your adventure with a complimentary Southfarthing beverage at the legendary Green Dragon Inn. Step into the story and let the enchantment of Hobbiton come to life!



# Itinerary *continued*

As the sun sets over Lake Okareka, embark on a three-hour guided kayak adventure into the night. Paddle along the tranquil shoreline before venturing into hidden caves illuminated by thousands of glowworms—a breathtaking natural spectacle. On the return journey, glide beneath a vast, star-filled sky, where the Milky Way shines overhead. This unforgettable experience will leave you with lasting memories and a sense of wonder.

**Rental Car Details:** All-Inclusive 3-Day Car Rental, North Island, Toyota Prado or similar, Automatic Transmission, 5 Door 4WD Station Wagon. Unlimited miles, motor vehicle insurance with nil excess. Airport/ferry fee, one way fees and additional driver fees (additional drivers must be registered on the rental agreement and present their current drivers license prior to driving).

**ACCOMMODATION:** Distinction Rotorua Hotel & Conference Centre or similar

**MEALS:** Breakfast

**TRANSPORTATION:** All-Inclusive 3-day Car Rental

**ACTIVITY:** Shared Movie Set Tour, Shared Kayak Tour

---



## Half Day Wai-o-tapu & Waimangu Eco Thermal Park Tour / Evening Te Po Guided Tour & Cultural Experience

Journey into the heart of Rotorua's geothermal wonderland on this immersive half day adventure. With a knowledgeable naturalist guide, explore two of the region's most spectacular geothermal parks—Wai-O-Tapu and Waimangu Volcanic Valley. Witness steaming vents, bubbling mud pools, and vividly colored hot springs as you learn about the powerful volcanic forces shaping New Zealand. Marvel at Wai-O-Tapu's otherworldly landscapes and the dramatic eruption of Lady Knox Geyser. Then, step into Waimangu Volcanic Valley, where the 1886 Mt. Tarawera eruption reshaped the land, creating a unique geothermal ecosystem rich in native flora and fauna. A scenic drive through volcanic terrain and lush forests completes this unforgettable exploration of Rotorua's fiery past and ever-evolving landscape.

Immerse yourself in Maori culture and Rotorua's geothermal wonders on this enriching evening experience. Explore the New Zealand Maori Arts & Crafts Institute, visit the Kiwi Conservation Centre, and witness the power of Pohutu Geyser in Te Whakarewarewa Valley. Then, enjoy a world-famous hangi buffet at Pataka Kai before stepping into the beautifully carved Te Aronui a Rua meeting house for a captivating cultural performance, featuring traditional welcomes, song, chant, poi, and the iconic haka. End the evening with hot chocolate and steamed pudding, surrounded by steam and the glow of the geyser terrace.

**ACCOMMODATION:** Distinction Te Anau Hotel and Villas or similar

**MEALS:** Breakfast | Dinner

**ACTIVITY:** Shared Park Tour, Shared Cultural Experience



# Itinerary *continued*



## Flight from Rotorua to Queenstown / Drive from Queenstown to Te Anau

This morning, make your way to Rotorua Airport for your flight to Queenstown. Upon arrival, pick up your rental vehicle and begin your South Island adventure. Enjoy a scenic drive from Queenstown to Te Anau, traveling through breathtaking landscapes of rolling farmlands, rugged mountains, and crystal-clear lakes.

Spend a leisurely afternoon in Te Anau, where you can stroll along the lakefront or visit the local shops and cafes. For nature enthusiasts, nearby walking trails and bird-watching opportunities offer a perfect way to relax while soaking in the stunning views of the surrounding mountains and forests.

Rental Car Details: All-Inclusive 6-Day Car Rental, South Island: Toyota Prado or similar, Automatic Transmission, 5 Door 4WD Station Wagon. Unlimited miles, motor vehicle insurance with nil excess. Airport/ferry fee, one way fees and additional driver fees (additional drivers must be registered on the rental agreement and present their current drivers license prior to driving).

**ACCOMMODATION:** Distinction Te Anau Hotel and Villas or similar

**MEALS:** Breakfast

**TRANSPORTATION:** All-Inclusive 6-day Car Rental, Self-Drive, 2 hours

---



## Full Day Milford Coach, Cruise & Walk Tour

Travel from Te Anau along the legendary Milford Road with expert local guides who bring Fiordland's rich natural history to life through stories and deep regional knowledge. This overland journey is more than a transfer—it's a fully immersive experience through one of New Zealand's most spectacular landscapes. Venture beyond the usual route to discover hidden gems like Gertrude Valley, Lake Gunn, and Marian Gantry, along with iconic stops such as Mirror Lakes and The Chasm.

At Milford Sound, board a small-boat cruise for an intimate two-hour voyage toward the Tasman Sea. Enjoy unbeatable indoor and outdoor viewing as you glide past towering cliffs, cascading waterfalls, lush rainforest, and perhaps spot fur seals or dolphins. Throughout the day, your guide will lead short walks, ranging from 5 to 40 minutes, tailored to the group, weather, and season.

**ACCOMMODATION:** Distinction Te Anau Hotel and Villas or similar

**MEALS:** Breakfast | Lunch

**ACTIVITY:** Shared Milford Tour



# Itinerary *continued*



## Drive Te Anau to Queenstown

Depart the tranquil shores of Lake Te Anau for a scenic drive through high country landscapes to Queenstown. The route follows trout-filled rivers and rolling farmland, with optional stops in the quaint towns of Mossburn and Lumsden for local flavor or a farm visit. Pause in Kingston to see the vintage Kingston Flyer steam train before continuing along Lake Wakatipu. The road winds between the lake and the dramatic Remarkables Range, guiding you into the alpine beauty of Queenstown—New Zealand's adventure capital.

This evening, ride the Skyline Gondola 1,476 feet above town to the summit of Bob's Peak. As Queenstown recedes below, enjoy a delicious buffet dinner with sweeping panoramic views—from Coronet Peak to the jagged Remarkables, and across Lake Wakatipu to Cecil and Walter Peaks.

**ACCOMMODATION:** Scenic Suites Queenstown or similar

**MEALS:** Breakfast | Dinner

---



## Full Day Funyak Safari with Jetboat Tour

Embark on an unforgettable journey into the heart of New Zealand's wilderness on a unique Dart River adventure. Start with an exhilarating jet boat ride through the river's braided channels—complete with thrilling spins—as your expert guide shares insights into the region's rare ecology and ancient landscapes.

Next, switch to an inflatable canoe for a guided paddle downstream. Glide through crystal-clear waters beneath towering peaks, exploring lush beech forests, hidden streams, and the dramatic Rockburn Chasm. Enjoy a relaxed buffet lunch in this stunning setting before continuing to "Paradise"—a fitting finale to your journey. Return to Glenorchy by back-country coach, passing through cinematic landscapes that have inspired filmmakers and adventurers alike.

**ACCOMMODATION:** Scenic Suites Queenstown or similar

**MEALS:** Breakfast | Lunch

**ACTIVITY:** Shared Funyak and Jetboat Tour



# Itinerary *continued*



## **Morning at Leisure / Evening Earnslaw Walter Peak Cruise & Gourmet Barbecue Dinner**

This morning, you have free time to relax and explore independently. Unwind with a lakeside stroll, a soak in a hot pool, or a wine tasting in nearby Gibbston Valley. With charming cafés, boutique shops, and jaw-dropping scenery around every corner, Queenstown offers the perfect mix of adventure and alpine relaxation.

This evening, board the historic TSS Earnslaw for a scenic cruise across Lake Wakatipu to Walter Peak Station. Enjoy breathtaking alpine views and explore the ship's vintage steam engines and heritage displays. At Walter Peak, stroll through lakeside gardens to the elegant Colonel's Homestead, where chefs prepare a gourmet BBQ featuring premium New Zealand meats, seafood, and fresh seasonal sides. Unwind by the open fire with a selection of fine local wines. After dinner, enjoy an entertaining farm demonstration, including seasonal sheep shearing. Then relax on the return cruise, complete with a classic piano sing-along, a perfect end to a magical evening.

**ACCOMMODATION:** Scenic Suites Queenstown or similar

**MEALS:** Breakfast | Dinner

**ACTIVITY:** Shared Cruise and Dinner

---



## **Depart Queenstown**

This morning, you will check out of your hotel, return your rental car, and board your onward flight at the Queenstown Airport.

**MEALS:** Breakfast

**TRANSPORTATION:** Self-Drive, 15 minutes

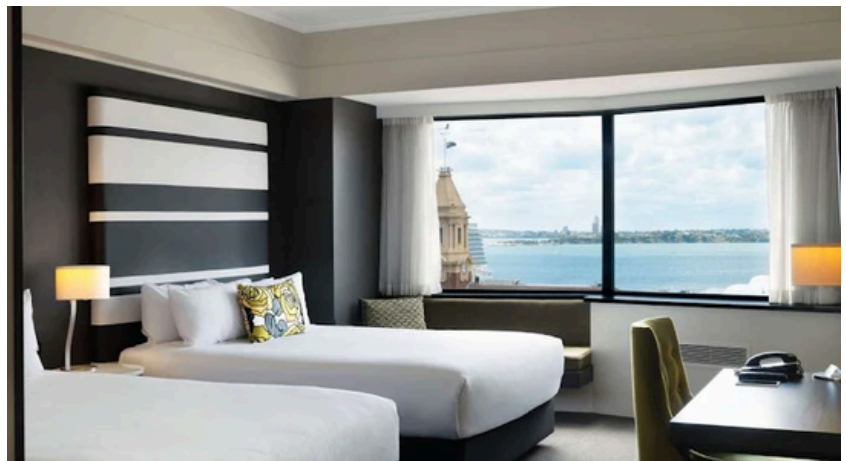




## Where You'll Stay

### **Movenpick Hotel Auckland**

Perfectly positioned in the heart of Auckland's vibrant waterfront district, Mövenpick Hotel offers a welcoming retreat with stunning views of the harbour and skyline. Just a short stroll from lively restaurants, boutique shopping, and the Viaduct Harbour, this modern hotel features well-appointed rooms, a full-service gym, and convenient valet parking. Cap off the day with panoramic views and seasonal fare at the top-floor Vue Restaurant and Bar—or indulge in a sweet treat during the hotel's signature daily Chocolate Hour.

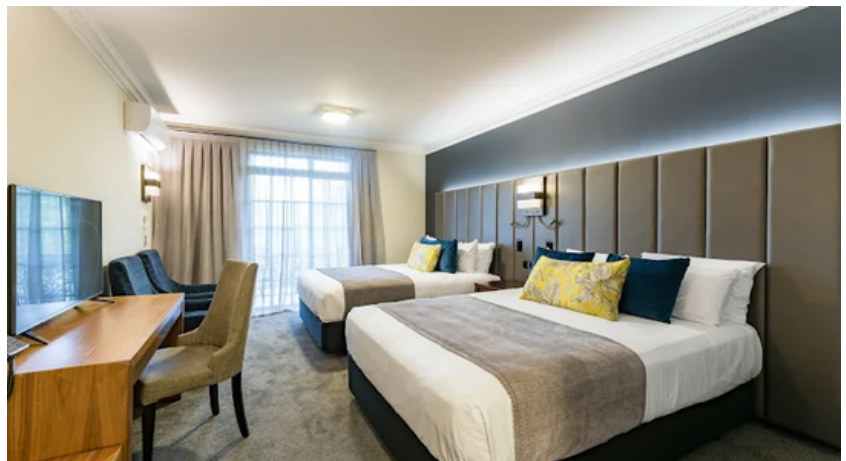




## Where You'll Stay

### **Distinction Rotorua Hotel & Conference Centre**

Set just minutes from Rotorua's city center and nestled beside the renowned Whakarewarewa Forest, Distinction Rotorua Hotel offers the perfect base for adventure and relaxation. Step straight into world-class mountain biking trails or unwind in the hotel's heated outdoor pool, spa, or private underground grotto spas. Four onsite restaurants and a cozy bar provide plenty of options for refueling after a day out. In the evening, immerse yourself in local culture with an unforgettable Maori dinner and performance, just steps from your room.







## Where You'll Stay

### **Distinction Te Anau Hotel and Villas**

Surrounded by extensive, colourful gardens and overlooking spectacular Lake Te Anau and the Fiordland ranges, this 4 star hotel sets the tone for your stay in one of the world's most breathtaking regions. Offering luxurious rooms and just a short stroll from the Te Anau town center, Distinction Te Anau is perfectly situated for you to make the most of this beautiful area.



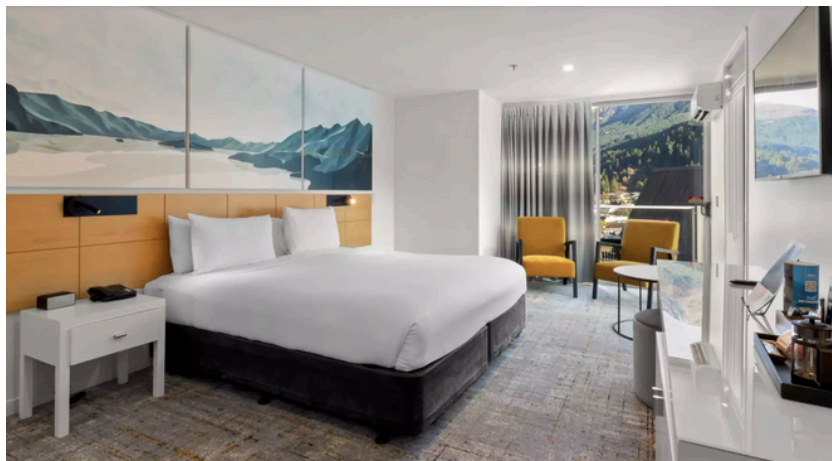




## Where You'll Stay

### Scenic Suites Queenstown

Set in an enviable hillside location just moments from the heart of Queenstown, Scenic Suites offers a peaceful alpine retreat with breathtaking views over Lake Wakatipu and the soaring Southern Alps. The hotel features spacious, apartment-style rooms and suites—many with panoramic lake and mountain vistas—providing a comfortable and convenient base for daily adventures. After a day of exploring Queenstown's trails, waters, or vibrant town center, return to this serene setting to relax and recharge in style.





# Pricing

---

- **Rates depend on many factors, like time of travel and number of travelers. Please contact our Custom Trip Consultants for more information.** A 25% non-refundable deposit is due upon acceptance of services. Final payment is due 95 days prior to departure.
- Pricing is subject to change until receipt of deposit. To view our full Terms and Conditions, please visit [www.mtsobek.com/terms](http://www.mtsobek.com/terms).

## PRICE INCLUDES

- Expertise and services of our experienced adventure guides
- All accommodations as noted in the itinerary
- Meals as noted in the daily itinerary with taxes and gratuities
- Snacks and water between meals
- Additional regional guides and experts on many trips
- Comprehensive Trip Planner with detailed pre-trip information
- Private guided tours at historic sites, museums, wineries and other select attractions as noted in the itinerary
- Special events and other select attractions as mentioned in the itinerary
- All gratuities at hotels and restaurants
- Equipment and experienced guides for activities as described in the itinerary
- Park and other entry fees (unless otherwise noted)
- Fares for trains, ferries and other modes of travel as listed in the itinerary
- Select transfers as mentioned in the itinerary
- Baggage transfers and portage

## PRICE DOES NOT INCLUDE

- Additional meals not noted in the daily itinerary
- Alcoholic beverages (MT Sobek provides wine at select events)
- Entry fees to National Parks, museums and other attractions when not accompanied by a guide, unless listed on inclusions
- Airfare, airport taxes or baggage fees for all flights
- Optional activities and spa services
- Personal expenses such as medical immunizations, laundry or souvenirs
- Gratuities for MT Sobek guides and guide-drivers
- Travel protection program
- Rental car

# Payments

---

## **PAYMENT SCHEDULE**

- A 25% deposit is due upon acceptance of services.
- Final payment is due 95 days prior to departure.

## **CANCELLATIONS & REFUNDS**

At the time we receive written notice that you must cancel your trip, the following fees will apply (all dates are from departure date):

- From time of reservation until 95 days prior to trip departure: 25% of land cost
- 94 to 61 days prior to trip departure: 50% of land cost
- 60 days or less prior to trip departure: 100% of land cost
- No refunds will be given for unused hotel rooms, meals, activities, or trek arrangements for any reason whatsoever. Land Cost is quoted as a package and credits are not given for services not used. Extra hotel nights cancelled within 60 days of departure are subject to up to 100% of the hotel cost. Internal Air, once purchased, is non-refundable.
- Cancellation and refund policy applies to the entire Land Cost of trip, including trip cost, internal airfare, park fees, permits, and taxes. We recommend you purchase the Optional Travel Protection Plan to protect your investment.

To view our full Terms and Conditions, please visit [www.mtsobek.com/terms](http://www.mtsobek.com/terms)