



Argentina & Chile Custom Adventure

Exploring Tierra del Fuego & Torres del Paine

Curated for MT Sobek Custom Clients

Thank you for checking out our adventures and for requesting this custom itinerary. Please note that this itinerary may be subject to change. Be sure to check with us before scheduling any flights.

We love talking travel!

Contact info@mtsobek.com
or call 510 594 6000.



Feel the difference

with **Mountain Travel Sobek**

Unrivaled Expertise

MT Sobek started it all! Since our first Everest Base Camp trek in 1969, we've been leading award-winning adventures and building authentic connections in far-flung locations around the world. We were named Best Adventure Tour Company in 2022 by USA Today's 10 Best Readers' Choice Awards.

Unique Trip Design

Our adventures are perfectly paced, with incredible attention to detail—the right mix of fun, learning, and challenge that guarantees lifelong memories. Plan nothing, enjoy everything. We take care of all of the logistics so that you can have more time to do what's most important: relax, take in the experience, and enjoy!

Custom Adventures

Private MT Sobek adventures are perfect for travelers who enjoy the flexibility of traveling in their own group, but who want the peace of mind that comes with having all of the logistics handled by true experts. We offer an array of perfectly tailored custom adventures and scheduled dates that your group can easily take over.





Argentina & Chile Custom Adventure

Set off on a breathtaking custom adventure through wild Patagonia, a land where dramatic fjords, towering glaciers, and rugged forests create a stunning natural tapestry. Set sail through crystal-clear waters dotted with icebergs, heading towards the remote tip of Cape Horn and the legendary Strait of Magellan. Your journey then takes you overland to explore the awe-inspiring Torres del Paine National Park, one of Patagonia's most iconic treasures. This carefully curated adventure offers a perfect blend of rugged wilderness and vibrant culture, showcasing the very best of Patagonia and beyond.

14 Days

Start: Buenos Aires, Argentina

End: Santiago, Chile

Activities: Hiking

Lodging: Luxury Hotels, Comfortable Hotels

ACTIVITY LEVEL: 2

Climate:

Average daytime temperatures are between 40s - 80s F with night time temperatures as low as the mid-30s F. While you're traveling at one of the driest times of the year, be prepared for some light rain. We recommend dressing in layers.

Your Custom Itinerary



Arrive Buenos Aires / Private City Tour

Upon arrival into Buenos Aires, meet your private driver and transfer to your overnight accommodations.

After settling into your hotel, meet your private local guide for a city tour of Buenos Aires. Visit important historical monuments on your way to Plaza de Mayo, where you will view the emblematic Casa Rosada. Next stroll through the eclectic neighborhoods of San Telmo, Boca, and Recoleta. Tour the winding aisles of Recoleta cemetery, containing graves of many of Argentina's most famous figures, such as Eva Peron. Your guide will impart expert knowledge of the history and culture of the city, which is one of the world's most interesting metropolises.

This evening enjoy a memorable night out in the city. Meet your private local guide at your hotel for a tango performance with musical accompaniment, followed by a delicious Argentine dinner. Experience the passion of the Argentine tango, which is the national dance of Argentina with important cultural and historic meaning. Relax and enjoy a glass of world famous Malbec wine before heading back to your hotel.

ACCOMMODATION: Palo Santo Hotel or Similar

MEALS: Dinner

TRANSPORTATION: Private transfers

ACTIVITY: Private touring, shared tango show



Estancia Visit at San Antonio de Areco

This morning, meet your private driver and set out to escape the city with a private tour to La Bamba de Areco, a tranquil Estancia just outside Buenos Aires. Renowned for its serene setting and rich history, La Bamba provides the perfect countryside retreat. Immerse yourself in Argentina's gaucho traditions and discover the customs and stories of these legendary horsemen. Enjoy a traditional Argentine Asado lunch, featuring expertly grilled meats, fresh salads, and hearty sides. Afterward, take a scenic horseback ride through the property or explore the area on foot, soaking in the natural beauty and cultural heritage of this peaceful destination. Afterward, meet your driver and return to Buenos Aires and enjoy the evening at leisure.

ACCOMMODATION: Palo Santo Hotel or Similar

MEALS: Breakfast | Lunch

TRANSPORTATION: Private transfers

ACTIVITY: Shared touring

Itinerary *continued*



Fly to Ushuaia

Today, after checking out of your hotel, meet your private driver for a transfer to Buenos Aires' AEP airport for your flight to Ushuaia. Upon arrival, meet your private driver and transfer to your overnight accommodations in Ushuaia, the southernmost city in the world and gateway to Patagonia's untamed beauty.

Enjoy the afternoon at your leisure, relaxing or exploring this charming town on your own. Depending on your arrival time, consider visiting one of its intriguing museums, such as the Thematic Gallery of Historia Fueguina, where over 120 life-size figures vividly bring the region's history to life. Don't miss the chance to savor Ushuaia's renowned local cuisine—this is the perfect place to indulge in fresh seafood. We recommend trying Blake Hake (Patagonian toothfish), a regional specialty and prized delicacy in Ushuaia.

ACCOMMODATION: Los Cauquenes Resort and Spa or Similar

MEALS: Breakfast

TRANSPORTATION: Private airport transfers



Morning at Leisure / Disembark from Ushuaia

Enjoy your morning at leisure relaxing or exploring more of Ushuaia on your own.

This afternoon, after checking out of your hotel, head to downtown Ushuaia to check in for your expedition cruise through the fjords of Tierra del Fuego. Board the Stella Australis, where you'll be welcomed with a toast and introduced to the captain and crew. As the journey begins, prepare to explore one of the most remote corners of the planet.

Overnight, traverse the Beagle Channel and cross from Argentine into Chilean territorial waters. Pass through the narrow Murray Channel, flanked by Navarino and Hoste Islands, as the city lights of Ushuaia fade into the distance.

ACCOMMODATION: M/V Stella Australis

MEALS: Breakfast | Dinner

TRANSPORTATION: Private transfer

ACTIVITY: Shared cruising

Itinerary *continued*



Cape Horn and Wulaia Bay

At dawn, the ship crosses Nassau Bay and enters the remote archipelago of Cape Horn National Park. Weather and sea conditions permitting, you'll go ashore on the windswept island that is home to the legendary Cape Horn (Cabo de Hornos), once the only navigation route between the Pacific and Atlantic Oceans and often called the "End of the Earth." Declared a UNESCO World Biosphere Reserve in 2005, the island features a Chilean naval lighthouse, staffed year-round by a lightkeeper and their family, along with the small Stella Maris Chapel and the modern Cape Horn Monument, currently undergoing repair after damage from fierce winds.

Returning across Nassau Bay, you'll anchor at the historic Wulaia Bay, celebrated for its dramatic landscapes and fascinating human history. Once the site of one of the region's largest Yámana settlements, the bay also boasts captivating natural beauty. Visit a small museum housed in a former radio station, showcasing exhibits on the Yámana people and early European missionaries.

Afterward, choose from three guided hikes of varying difficulty, each ascending the wooded mountain behind the bay. These trails take you through enchanting Magellanic forests filled with native trees like lengas, coigües, and canelos, as well as lush ferns. Each route leads to panoramic viewpoints offering breathtaking vistas of Wulaia Bay and its surroundings.

ACCOMMODATION: M/V Stella Australis

MEALS: Breakfast | Lunch | Dinner

ACTIVITY: Shared cruising and excursions



Pia Glacier

Overnight, the ship continues its journey around the western edge of Tierra del Fuego, navigating the narrow Gabriel, Magdalena, and Cockburn Channels. After rounding the remote Brecknock Peninsula, the ship turns eastward and reenters the Beagle Channel. By morning, you'll arrive at Pia Fjord and embark on a Zodiac excursion to the stunning Pia Glacier.

After disembarking, choose between a short hike to a panoramic viewpoint overlooking the glacier, which descends majestically from mountaintops to the sea, or a more challenging trek along a lateral moraine of the former Pia Glacier for an up-close perspective.

Itinerary *continued*

As the ship continues west along the Beagle Channel, you'll enter another fjord and anchor near the impressive Garibaldi Glacier, one of the few glaciers in Patagonia that is gaining mass. Here, take a guided hike through pristine Magellanic forest to a glacial waterfall surrounded by lush ferns and moss, with breathtaking viewpoints overlooking the glacier and fjord. This hike is demanding, with steep terrain and uneven footing, making it best suited for adventurous travelers. For those who prefer to stay onboard, the captain will position the ship's bow toward the sky-blue Garibaldi Glacier, offering spectacular views from the comfort of the upper decks.

ACCOMMODATION: M/V Stella Australis

MEALS: Breakfast | Lunch | Dinner

ACTIVITY: Shared cruising and excursions



Agostini Sound

Early this morning, the ship navigates through the Cockburn Channel and enters Agostini Sound, offering breathtaking views of glaciers cascading from the heart of the Darwin Mountain Range, with some reaching all the way to the water. Disembark for a leisurely walk around a serene lagoon formed by the melting Águila Glacier. The trail leads to a stunning viewpoint directly in front of the glacier, where you can fully appreciate its majestic beauty.

In the afternoon, board a Zodiac to approach the Condor Glacier, marveling at its impressive ice formations. With luck, you may spot some of the magnificent Andean condors that inhabit this remote and pristine area.

ACCOMMODATION: M/V Stella Australis

MEALS: Breakfast | Lunch | Dinner

ACTIVITY: Shared cruising and excursions



Hike with Penguins, Disembark & Transfer to Torres del Paine

After an overnight cruise through the Magdalena Channel and back into the Strait of Magellan, the ship anchors off Magdalena Island, located roughly halfway between Tierra del Fuego and the Chilean mainland. Dominated by a distinctive lighthouse, the island once served as a crucial stopover for explorers and navigators and is now home to a vast colony of Magellanic penguins.

At dawn, weather permitting, you'll disembark and hike a path that winds through thousands of penguins, leading to a small museum housed in the historic 1902 lighthouse. The island is also home to a variety of other bird species. In September and April, when the penguins are elsewhere, this excursion is replaced by a Zodiac ride to Marta Island, where you can observe South American sea lions.

Itinerary *continued*

After a brief cruise south along the strait, disembark in Punta Arenas, Chile. Upon your arrival, meet your private driver and transfer to your overnight accommodation ideally located inside of stunning Torres del Paine National Park.

ACCOMMODATION: Hotel Lago Grey or Similar

MEALS: Breakfast | Dinner

ACTIVITY: Shared lodge activities



Explore Torres del Paine National Park

Enjoy three days in the park, choosing from a variety of guided activities, or simply choose to relax and explore the surrounding area on your own.

Early this morning after breakfast, set off on your first day of exploring stunning Torres del Paine National Park, famous for its epic views of mountains, waterfalls, lush forests, clear rivers, and sweeping valleys.

Today we recommend a full day guided hike to the Base of the Towers, for one of the most scenic and famous viewpoints in the world, and a top bucket list hike for hikers worldwide. The trek begins at your hotel, where you will meet your guide and hike through the Ascencio Valley, crossing a beautiful forest of Lenga trees eventually arriving at the moraine, the most challenging section of the trail. After ascending the moraine trail, you are rewarded with a jaw-dropping spectacle of the immense granite spires rising into the sky, reflected in the glacial lake. After a well-deserved break to admire the views, return down the trail and back to your accommodations for the evening.

ACCOMMODATION: Hotel Lago Grey or Similar

MEALS: Breakfast | Lunch | Dinner

ACTIVITY: Private or shared activity



Explore Torres del Paine National Park

Today enjoy a second day full day of exploring Torres del Paine National Park. We recommend a guided hike into the famous French Valley, the majestic heart of Torres del Paine.

Your day begins with a drive to the shores of Lake Pehoé, where you will board a catamaran to cross to the opposite side. From there, you will arrive at Paine Grande and begin the hike along the north side of Lago Skottsberg to the base of the French Valley, where you'll stop for a snack break. At this point, you can choose to return or continue hiking along a steep trail that climbs above the tree line, offering breathtaking views of glaciers, jagged peaks, and the iconic Cuernos del Paine. After soaking in the scenery, you'll hike back to your starting point to conclude the day, and head back to your overnight accommodations.

Itinerary *continued*

ACCOMMODATION: Hotel Lago Grey or Similar

MEALS: Breakfast | Lunch | Dinner

ACTIVITY: Private or shared activity



Explore Torres del Paine National Park

This morning, enjoy scenic drive to the shores of Lago Grey, home to one of Patagonia's most stunning natural wonders: the vast, blue-tinted Grey Glacier. From the lake's edge, you will board a boat to cross the water and draw close to the glacier's towering ice walls and drifting icebergs. After disembarking, enjoy a moderate hike through lenga forests and rugged terrain to several viewpoints that reveal the glacier's immense scale and mesmerizing colors. Along the way, your guide will share fascinating insights about the glacier's formation and the fragile ecosystem it supports. After taking in the breathtaking sights, you'll return by boat across the lake and back to your hotel for the evening.

ACCOMMODATION: Hotel Lago Grey or Similar

MEALS: Breakfast | Lunch | Dinner

ACTIVITY: Private or shared activity



Transfer to Punta Arenas / Fly to Santiago

This morning after breakfast, meet your private driver and transfer to Punta Arenas for your flight bound for Santiago, Chile. Upon your arrival into Santiago, meet your private driver and transfer to your overnight accommodations.

ACCOMMODATION: The Singular Hotel or Similar

MEALS: Breakfast

TRANSPORTATION: Private transfers



Santiago City Tour / Depart Santiago

Meet your guide this morning for a private city tour of charming Santiago. Nestled in a valley surrounded by the beautiful Andes mountains, the capital city is known for its colorful neighborhoods, vibrant culture and neo classical architecture. Discover the city's rich history as you visit famous sites like the Moneda Presidential Palace, the fascinating Pre-Columbian Museum, and San Cristobal Hill.

This evening transfer to the Santiago airport and board your home bound flight. Most flights departing Santiago for the US are in the evening.

MEALS: Breakfast

TRANSPORTATION: Private transfers

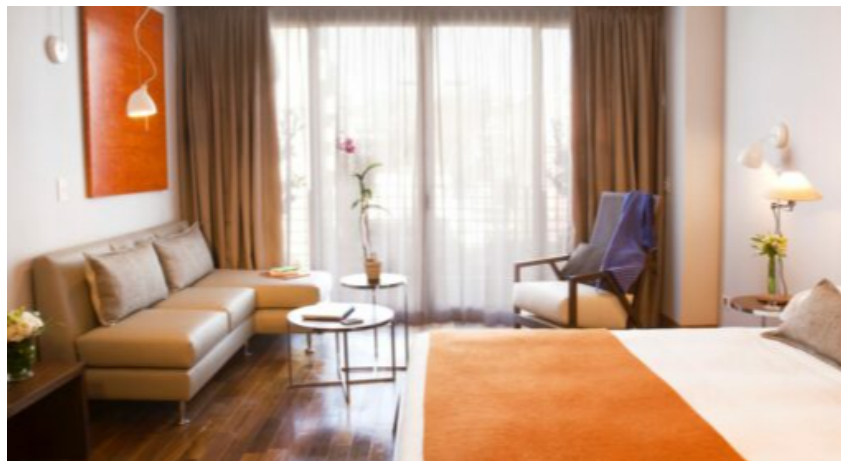
ACTIVITY: Private touring



Where You'll Stay

Palo Santo Hotel

The boutique Palo Santo hotel, located in the heart of Buenos Aires, seamlessly blends contemporary design with the rich cultural tapestry of Argentina. Each room is a sanctuary of style and comfort, adorned with locally sourced materials and artisanal touches. Guests can enjoy the on-site restaurant and rooftop terrace with panoramic views of the city skyline.





Where You'll Stay

Los Cauquenes Resort and Spa

Los Cauquenes is Ushuaia's only high-end resort and spa located on the Beagle Channel beach, with wide windows and a stunning communal glass room affording spectacular views of this picturesque waterway. It's also conveniently located just a 15-20 minute drive from the town center and airport. The 45 guestrooms feature luxury amenities and memorable views of the channel and the snowy peaks of the Andes. Relax in the spa, dine at the hotel's prestigious gourmet restaurant, and enjoy direct access to a private beach for shore walks at dawn and dusk, taking in the extraordinary variety of birdlife.

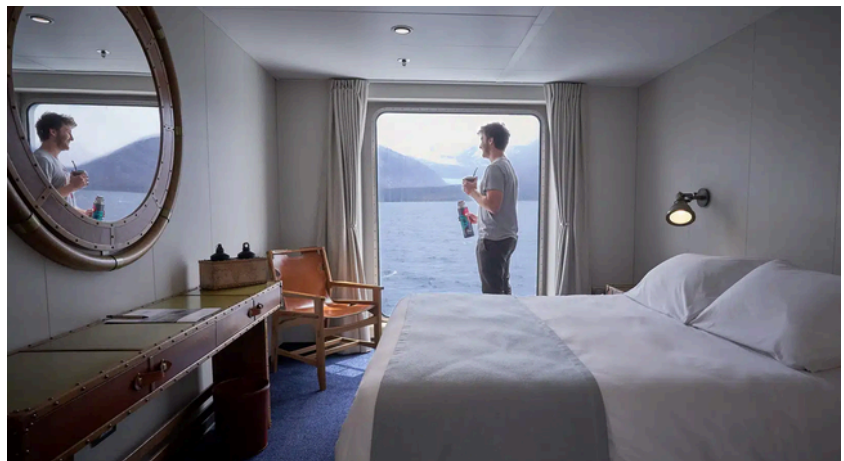




Where You'll Stay

M/V Stella Australis

The Stella Australis is a 210-passenger expedition vessel, tailor-made for exploring the remote southern tip of South America. All aspects of the ship are designed for the extreme maneuverability needed to navigate narrow fjords and channels where no other cruise ships can venture. Like her sister ship, Ventus Australis, she features gourmet dining with an all-inclusive bar, three lounges, an open top deck, and spacious light-filled cabins.





Where You'll Stay

Hotel Lago Grey

Hotel Lago Grey is the perfect base for discovering the western side of Torres del Paine National Park, and features a privileged view of Grey Lake. The hotel has 60 spacious rooms, including 36 Superior rooms that have lake, mountain, and glacier views. All rooms are warm and comfortable, with Wi-Fi (in common areas), safe, and a phone.





Where You'll Stay

The Singular Hotel

The Singular combines the style of early 20th-century buildings with neoclassical French architectural influences. The neighborhood is at the epicenter of the arts, with some of the finest visual and performance art in Chile just a short walk from the hotel. Dine in the onsite restaurant or have a drink at Bar Merced or the Rooftop Bar.



Pricing

- **Rates depend on many factors, like time of travel and number of travelers. Please contact our Custom Trip Consultants for more information.** A 25% non-refundable deposit is due upon acceptance of services. Final payment is due 95 days prior to departure.
- Pricing is subject to change until receipt of deposit. To view our full Terms and Conditions, please visit www.mtsobek.com/terms.

PRICE INCLUDES

- Expertise and services of our experienced adventure guides
- All accommodations as noted in the itinerary
- Meals as noted in the daily itinerary with taxes and gratuities
- Snacks and water between meals
- Additional regional guides and experts on many trips
- Comprehensive Trip Planner with detailed pre-trip information
- Private guided tours at historic sites, museums, wineries and other select attractions as noted in the itinerary
- Special events and other select attractions as mentioned in the itinerary
- All gratuities at hotels and restaurants
- Equipment and experienced guides for activities as described in the itinerary
- Park and other entry fees (unless otherwise noted)
- Fares for trains, ferries and other modes of travel as listed in the itinerary
- Select transfers as mentioned in the itinerary
- Baggage transfers and portage

PRICE DOES NOT INCLUDE

- Additional meals not noted in the daily itinerary
- Alcoholic beverages (MT Sobek provides wine at select events)
- Entry fees to National Parks, museums and other attractions when not accompanied by a guide, unless listed on inclusions
- Airfare, airport taxes or baggage fees for all flights
- Optional activities and spa services
- Personal expenses such as medical immunizations, laundry or souvenirs
- Gratuities for MT Sobek guides and guide-drivers
- Travel protection program
- Rental car

Payments

PAYMENT SCHEDULE

- A 25% deposit is due upon acceptance of services.
- Final payment is due 95 days prior to departure.

CANCELLATIONS & REFUNDS

At the time we receive written notice that you must cancel your trip, the following fees will apply (all dates are from departure date):

- From time of reservation until 95 days prior to trip departure: 25% of land cost
- 94 to 61 days prior to trip departure: 50% of land cost
- 60 days or less prior to trip departure: 100% of land cost
- No refunds will be given for unused hotel rooms, meals, activities, or trek arrangements for any reason whatsoever. Land Cost is quoted as a package and credits are not given for services not used. Extra hotel nights cancelled within 60 days of departure are subject to up to 100% of the hotel cost. Internal Air, once purchased, is non-refundable.
- Cancellation and refund policy applies to the entire Land Cost of trip, including trip cost, internal airfare, park fees, permits, and taxes. We recommend you purchase the Optional Travel Protection Plan to protect your investment.

To view our full Terms and Conditions, please visit www.mtsobek.com/terms